

## Rollstock vacuum packaging machine

### BRIEF DESCRIPTION

New invention for profile frame of the rollstock machine is that the die stamping aluminum alloy profile frame and carrier, which is pressed together, features high level in linearity and precision, meeting the mechanism running requirements. Simple structure and easy production, instead of multiple parts jointing in traditional profile frame and carrier, figure out the problem of easy-broken and complex maintenance.

### BACKGROUND OF THE INVENTION

The film clamped and pulled by the chain moves forward and backward along the slide chute, which is built in the carrier. Traditionally, the profile frame is made up of aluminum or welding structure, and the chain slide chute is jointing parts. Out of these inherent structure shortness, the linearity and precision are in very low level, the parts are easy wear and tear, difficult to maintenance. Moreover, it takes longer time and costs highly during installation of the rollstock machine.

### CONTENT

The new profile frame system of the continuous rollstock machine is made up of profile frame, carrier, slide chute and hollow groove. The profile frame and carrier are punched together into integral structure. The T-shape slide chute is designed in the upper position of the profile frame. And the hollow groove is between the carrier and profile frame.

Brief description of the drawing figure is as follows:

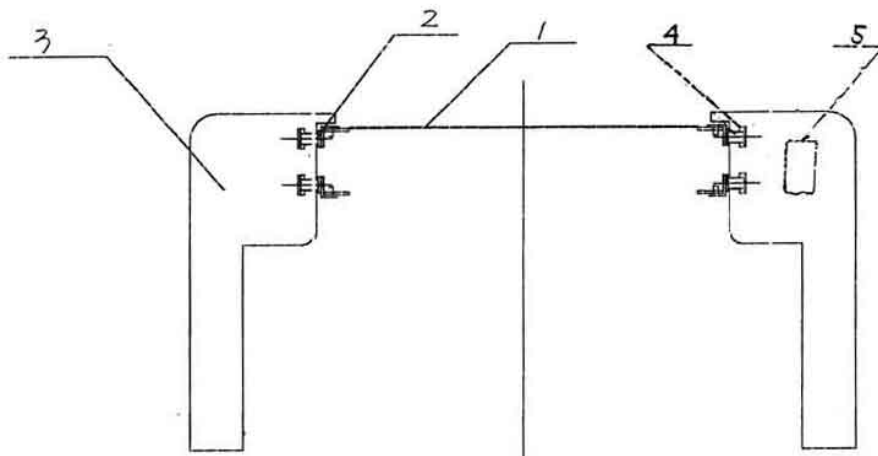


Figure 1 is the film

Figure 2 is the chain clamp

Figure 3 is the profile frame and the carrier

Figure 4 is the slide chute

Figure 5 is the hollow groove

The integral design for profile frame system enhances the film feeding precision. Figure 3 shows the integral frame structure, which is easy for mass production, and lower the manufacturing cost. Figure 4 shows that the pre die punching slide chute, instead of traditional multi parts jointing, highly improves the film feeding performance. Figure 5 shows the hollow groove, which saves the material cost on the base of ensuring the structure reliability.

Adoption of the new invention, the BMSPACK rollstock machine is much more reliable with high precision. Moreover, it features easy maintenance, long life usage and almost no wear and tear.

**BMSPACK****BETTER PACKAGING**

---

Add: Rm.D-602, No.18 Bakeyusuo Tongzhou district, Beijing – China  
Tel:+86-139 1130 3927 Fax:+852-3178 1675 [www.bmspack.com](http://www.bmspack.com)